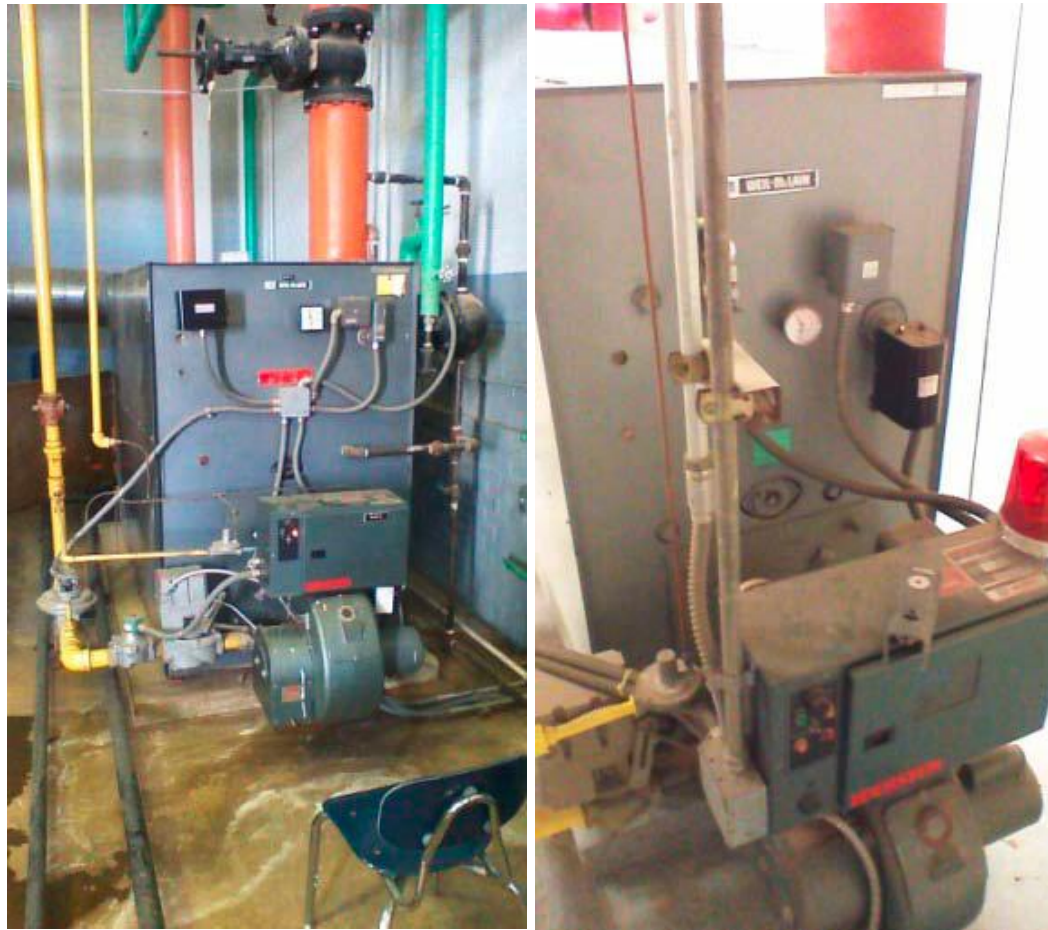




### OCS Facility Recommendations

- 2013 Facilities Assessment reflected needed repairs/replacements/additions in excess of \$160M as of the date of the assessment.
- OCS receives approximately \$2.6M for capital funding annually.
- OC Board of Education prioritized projects in the following categories assuming approximately \$50 Million would be made available through bond proceeds or other cost sharing arrangements:
  - Safety;
  - Critical infrastructure projects whose cost would exceed CIP funding capabilities, including roof replacement and replacement of antiquated and failing mechanical systems in some schools;
  - Cedar Ridge High School classroom wing addition;
  - Replacement of Transportation facilities.
- Phase 1 projects per the attached sheet represent those for which 2016 bond funding would be utilized.
- To the extent they are available, School Construction Impact Fees are requested for project planning to ensure “shovel-ready” status.
- Based on approved CAP Certificates to date, OCS has adequate elementary and middle school capacity for the current 10-year CIP period. However, two major developments in the Town of Hillsborough are likely to significantly diminish the capacity within a relatively short time period. For that purpose, Elementary #8 has been included as a Phase III project. The Cedar Ridge classroom addition will address the needed high school capacity, which is projected to reach SAPFO capacity by 2022. A planning/constructing/opening period of approximately three years is anticipated. District leadership remains concerned that the 110% high school capacity upon which SAPFO is built is no longer a viable and safe level of occupancy and would request the County’s review over the next year.
- Replacement and consolidation of Transportation facilities is included in the OCS Phase 1 request, but is envisioned as a joint project with CHCCS. OCS is the recognized LEA for Transportation for both OCS and CHCCS (State only recognizes one per County). The 1950’s vintage Transportation facilities for both CHCCS and OCS are woefully inadequate. Some buses will not fit and still close the bay doors, for example.
- Potential bond funds will allow OCS to divert future pay-as-you-go CIP funds to other needed projects.
- Unfunded projects would be addressed as future allocations allow.



## ORANGE COUNTY SCHOOLS PRIORITY BOND PROJECTS

\*All Safety/Security funding included in "District-Wide Safety" total

Location	Scope of Work	Est. Cost	Prioritization for Potential Bond Funding
<b>A.L. STANBACK MIDDLE</b>	--Replace antiquated/failing mechanical systems; -- Implement safety study recommendations* --Roof Replacement; multiple sections per roof study recommendations	\$5.8 Million	Phase 1
<b>CAMERON PARK ELEMENTARY</b>	--Replace antiquated/failing mechanical systems; --Implement safety study recommendations*	\$1.9 Million	Phase 1
<b>CEDAR RIDGE HIGH SCHOOL</b>	--New classroom wing increases capacity by 500 students --Implement SHI safety recommendations*	\$14.5 Million	Phase 1
<b>CENTRAL ELEMENTARY</b>	-- Replace antiquated/failing mechanical systems; --Implement safety study recommendations* --Roof Replacement; multiple sections per roof study recommendations	\$2.25Million	Phase 1
<b>C.W. STANFORD MIDDLE</b>	--Implement safety study recommendations*		Phase 1
<b>EFLAND-CHEEKS ELEMENTARY</b>	-- Replace antiquated/failing mechanical systems; -- Implement safety study recommendation* --Roof Replacement; multiple sections per roof study recommendations	\$2.35 Million	Phase 1
<b>GRADY BROWN ELEMENTARY</b>	-- Implement safety study recommendations* -- Roof Replacement; multiple sections per roof study recommendations (including hazardous material mitigation) --Window replacement	\$2.1 Million	Phase 1
<b>GRAVELLY HILL MIDDLE</b>	--Implement safety study recommendations*		Phase 1
<b>HILLSBOROUGH ELEMENTARY</b>	-- Replace antiquated/failing mechanical systems; --Implement safety study recommendations* --Roof Replacement per study recommendations	\$2.1 Million	Phase 1
<b>NEW HOPE ELEMENTARY</b>	-- Replace antiquated/failing mechanical systems --Implement safety study recommendations*	\$2 Million	Phase 1

Location	Scope of Work	Est. Cost	Prioritization for Potential Bond Funding
<b>ORANGE HIGH SCHOOL</b>	--Replace antiquated/failing mechanical systems (geo-thermal) --Implement safety study recommendations*	\$8.9 Million	Phase 1
<b>PARTNERSHIP ACADEMY</b>	--Implement safety study recommendations*		Phase 1
<b>PATHWAYS ELEMENTARY</b>	--Implement safety study recommendations*		Phase 1
<b>DISTRICT-WIDE SAFETY</b>	--Implement safety study recommendations.	\$2.7 M	Phase 1
<b>TRANSPORTATION</b>	--Joint project with CHCCS: Replace two 1950's vintage facilities with co-located, code-complaint operations and maintenance base. OCS is the LEA of record with the State of NC for Transportation services.	\$8 Million**	Phase 1
	<b>Total Phase 1 Projects for Proposed 2016 Bond</b>	<b>\$52,600,000**</b>	
	**Transportation facility estimate assumes TBD funding contribution by CHCCS		
	<b>Projects to be Completed in Later Phases (Unfunded)</b>		
<b>Efland-Cheeks Elementary</b>	--Classroom expansion wing to accommodate expected growth from growth in western Orange --Pre-K addition	\$3Million	Phase II
<b>Orange High</b>	--Replace Ag Building	\$3.7Million	Phase II
<b>Central Elementary</b>	--Media center expansion --Office expansion	\$1.1Million	Phase II
<b>Various schools</b>	--HVAC system replacements identified in 2013 Facilities Assessment and not included in Phase 1	\$4.6 Million	Phase II
<b>Elementary #8</b>	--to accommodate future growth anticipated from Hillsborough developments	\$25.5Million	Phase III
	<b>Unfunded OC Board of Education Priority Projects</b>	<b>\$33.3 Million</b>	

